

D-SUB

LOW PROFILE STRAIGHT PCB MOUNT

SPECIFICATIONS

Material:

Shell: Steel, tin-plated
Insulator: PBT, glass reinforced thermoplastic, rated UL 94V-0
Insulator color: Black
Contacts: Phosphor Bronze
Hardware: Brass, nickel plated

Plating:

5 µin gold on contact area over 50 µin nickel underplate, tin-lead on solder-pins



Electrical:

Operation voltage: 250 VAC max
Current rating: 3 Amps max
Contact resistance: 20 mΩ max
Insulation resistance: 3000 MΩ min @ 1000 VDC between adjacent contacts (75° F and 50% R.H.)
Dielectric withstanding voltage: 1000 VAC min rms (sea level)

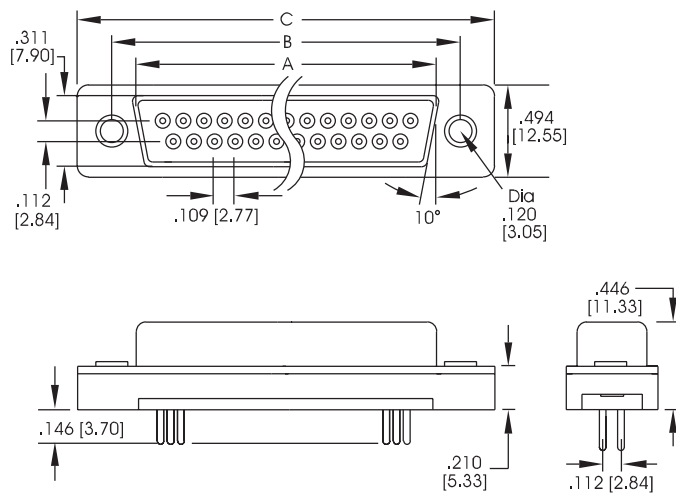


ORDERING INFORMATION

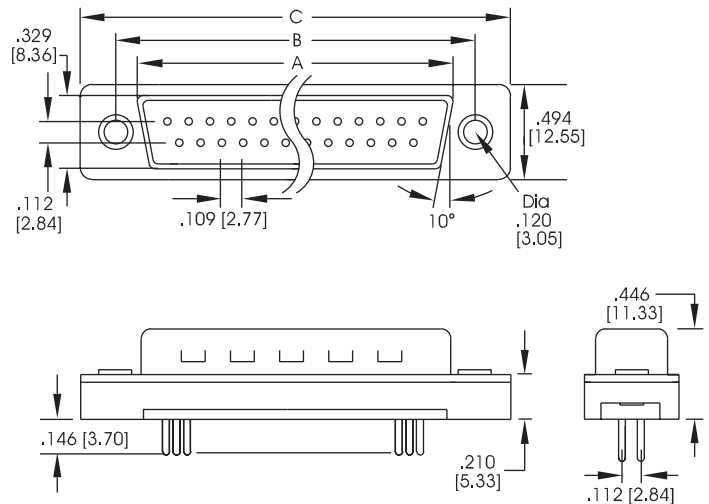
choose one from each category as shown in sample below

DG		9P	Options
Series	Positions/ Gender		
DG - D-Sub Low Profile Straight PCB Mount	Plug: 9P, 15P, 25P Socket: 9S, 15S, 25S		CN - Clinch nut JI - Clinch nut with Jackscrew installed PF - Press Fit Pins

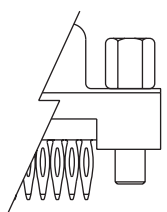
SOCKET - FLUSH PROFILE



PLUG - FLUSH PROFILE

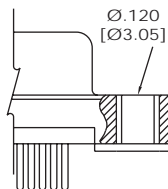


PRESS FIT OPTION

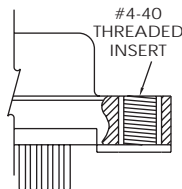


PF Option

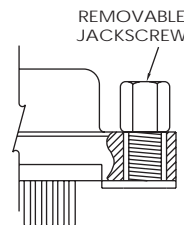
MOUNTING OPTIONS



Standard



CN Option



JI Option

PC BOARD LAYOUT

