

# DVI CONNECTOR

DIGITAL VIDEO INTERFACE



## SPECIFICATIONS

### Material:

**Insulator:** PBT, glass reinforced thermoplastic, rated UL 94V-0  
 Color: Natural  
**Contacts:** Phosphor Bronze

### Plating:

5 µin gold on contact area and 100 µin tin-lead on solder-tails

### Electrical:

**Operation voltage:** 250 VAC max  
**Current rating:** 5 Amp max  
**Contact resistance:** 20 mΩ max  
**Insulation resistance:** 1000 MΩ min @ 1000 VDC between adjacent contacts (75°F and 50% R.H.)  
**Dielectric withstanding voltage:** 1000 VDC min rms (sea level)

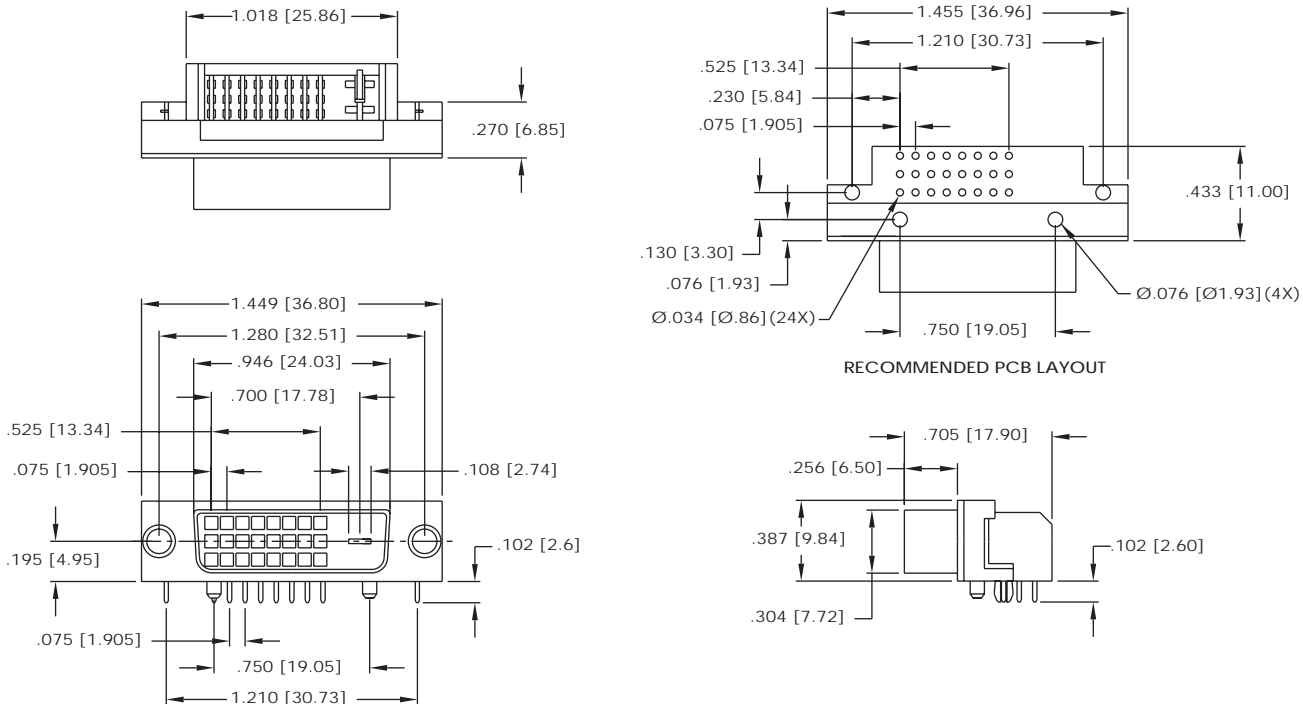


## ORDERING INFORMATION

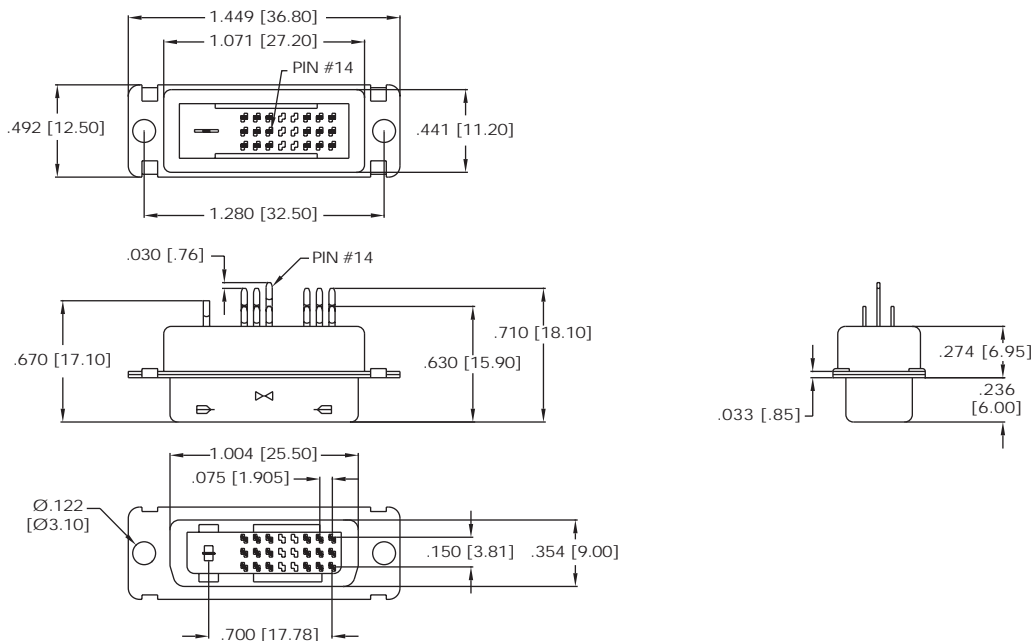
choose one from each category as shown in sample below

DVI	1P	18/1	S
Series	Interface/ Gender	Positions	Termination
DVI - Digital Video Interface	<del>1P - Male Integrated Digital/Analog</del> <del>2P - Male Digital</del> 1F - Female Integrated Digital/Analog 2F - Female Digital	18/1 (Digital) 18/5 (Analog/Digital) 24/1 (Digital) 24/5 (Analog/Digital)	S - Solder Terminals P - PCB Mount Straight R - PCB Mount Right Angle

## DVI - 2F - 24/1 - R



## DVI - 2P - 24/1 - S



## DVI - 1F - 24/5 - P

