

6

5

4

3

2

1

### MATERIAL AND FINISH

Insulator: Nylon 66, black, UL-94V-0 rated  
Contacts: Brass, Tin plated

### ELECTRICAL SPECIFICATIONS:

Current rating: 16 A  / 20 A 

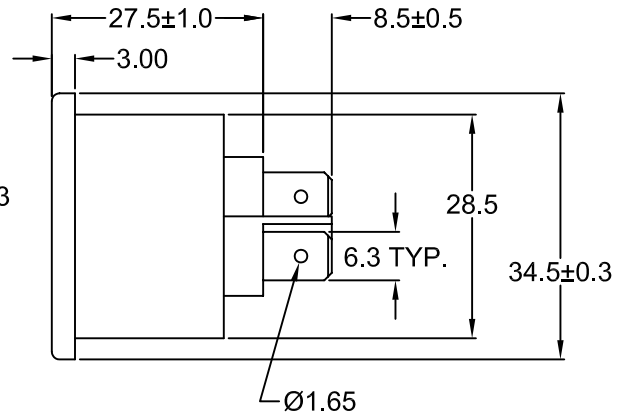
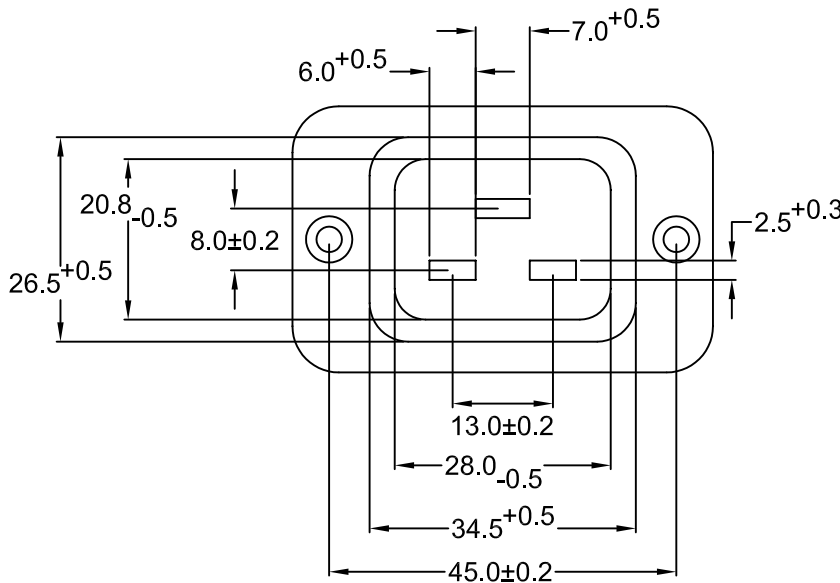
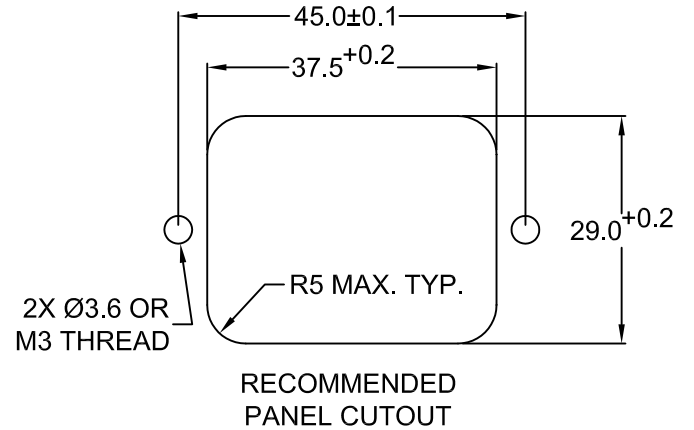
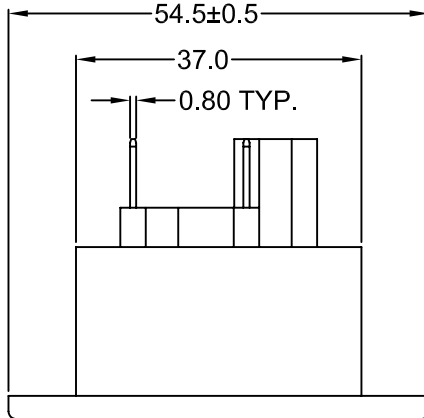
Voltage rating: 250 VAC

Insulation resistance: 100 Mohm min. at 500 VDC

Dielectric withstanding voltage: 2000 VAC for one minute

### ENVIRONMENTAL:

Operating temperature: 70°C max.



Distributed by Electro-Stock, Inc. [sales@electrostock.com](mailto:sales@electrostock.com)  
630-682-1542 Fax 630-682-1562 <http://www.electrostock.com>

### REVISIONS

REV	DATE	CHANGE	CHNG		CHK		APPR	
			PB	SS	TD	JJ	TD	PB
A	5/16/00	UPDATED DRAWING						
B	8/4/00	UPDATED VOLTAGE						
C	10/18/00	REV. D HOLE PER PART						
D	4/19/01	REVISED PART DESC.						
E	10/16/01	REVISED / UPDATED						
F	6/8/04	ADD OPERATING T°						

TOLERANCE  
UNLESS OTHERWISE SPECIFIED  
X ± 1  
X.X ± 0.4  
X.XX ± 0.20

**Power Dynamics, Inc.**

Phone: 973 560-0019 Whippany, New Jersey Fax: 973 560-0076

PART: 16A/20A IEC 60320 APPL. OUTLET; QC  
TERMINALS; SIDE FLANGE, PANEL MOUNT

DRAWN BY	SLS	DATE:	03/14/97
CHECK BY	TD	DATE:	05/17/00
APPR BY	JJ	DATE:	05/17/00

PART #: 43R07-1121		SHEET 1 of 1
SIZE: A	ALL DIMENSIONS FOR REFERENCE ONLY DIMENSIONS ARE IN MILLIMETERS	
SCALE: NTS		REV: F

6

5

4

3

2

1

6

5

4

3

2

1

MATERIAL AND FINISH:

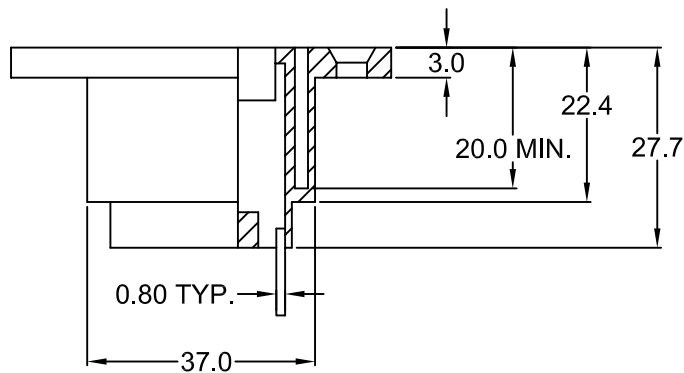
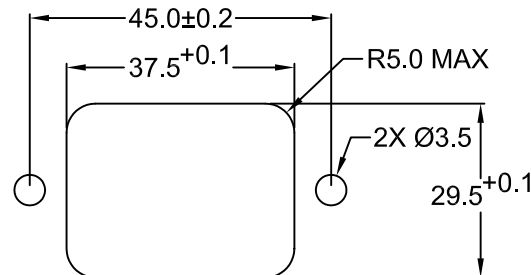
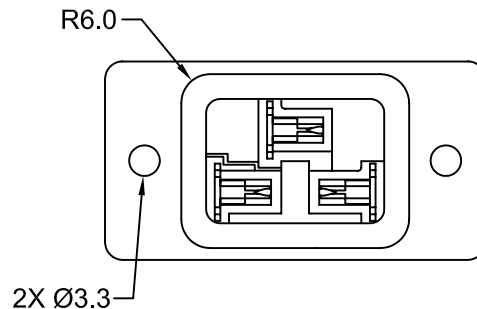
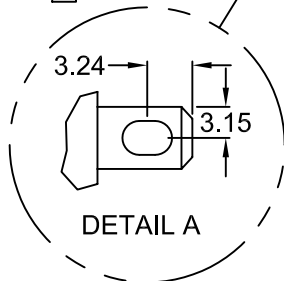
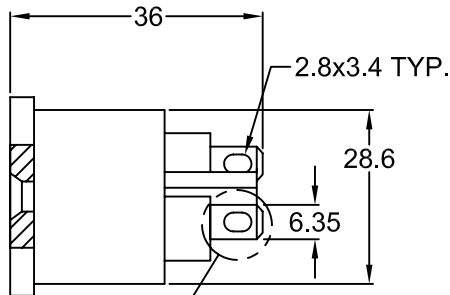
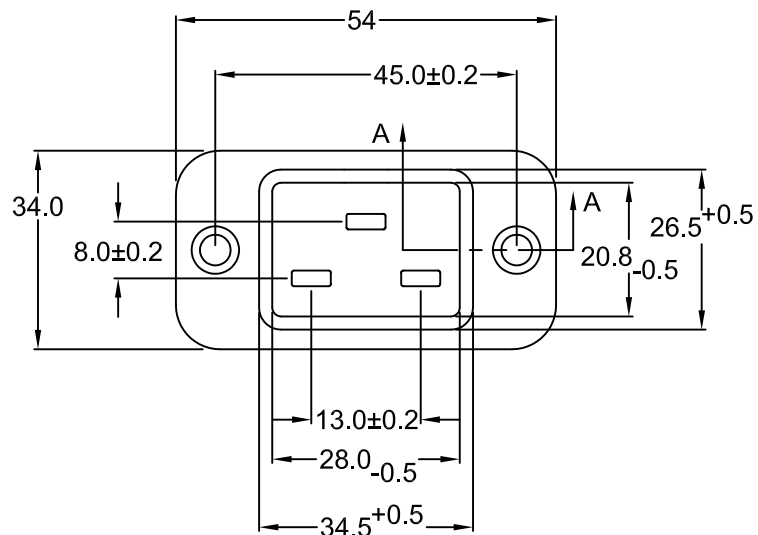
Insulator: PBT, UL 94V-2 rated. color black.  
Contact: Copper alloy, tin plating.

ELECTRICAL SPECIFICATIONS:

Current rating: 16 A  
Voltage rating: 250 VAC  
Current rating: 20 A  
Voltage rating: 250 VAC  
Insulation resistance: 100 Megaohm min. at 500 VDC  
Dielectric withstanding voltage: 2000 VAC for 1 minute



Distributed by Electro-Stock, Inc. sales@electrostock.com  
630-682-1542 Fax 630-682-1562 http://www.electrostock.com



SECTION A-A

REV	DATE	CHANGE	CHNG CHECK APPR		
			PB	TD	TD
A	4/11/01	UPDATED DRAWING	PB	TD	
B	6/8/01	REVISED TERMINAL	PB	TD	
C	6/11/01	ADD DIMENSIONS	PB	TD	

TOLERANCE UNLESS OTHERWISE SPECIFIED	
X	± 1
X.X	± 0.4
X.XX	± 0.20
DRAWN BY	SLS
DATE:	3/14/97
CHECK BY	TD
DATE:	4/11/01
APPR BY	
DATE:	

**Power Dynamics, Inc.**  
Phone: 973 560-0019 Whippany, New Jersey Fax: 973 560-0076

PART: IEC FEMALE 60320 CONNECTOR  
FLANGED; 6.3mm QUICK CONNECT

PART #: <b>43R07-1121-OVAL</b>		SHEET 1 of 1
SIZE: A	ALL DIMENSIONS FOR REFERENCE ONLY DIMENSIONS ARE IN MILLIMETERS	REV: C
SCALE: NTS		

6

5

4

3

2

1