

### MATERIAL AND FINISH

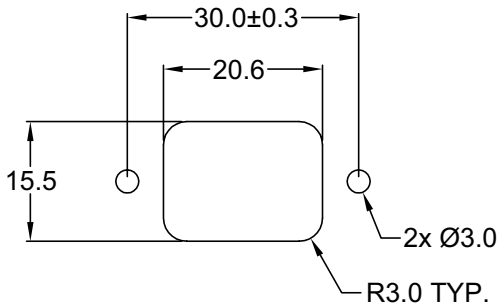
Insulator: Glass filled Thermoplastic, color black, UL-94V-0  
Contacts: Bronze, Nickel plated

### ELECTRICAL SPECIFICATIONS:

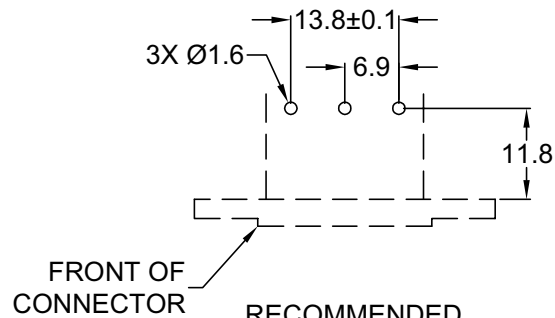
Rated current: 2.5A  
Rated voltage: 250VAC



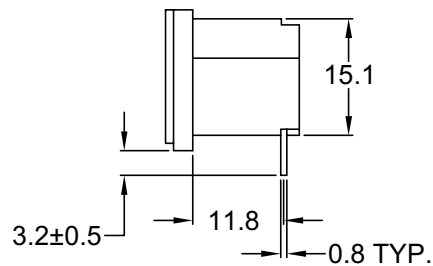
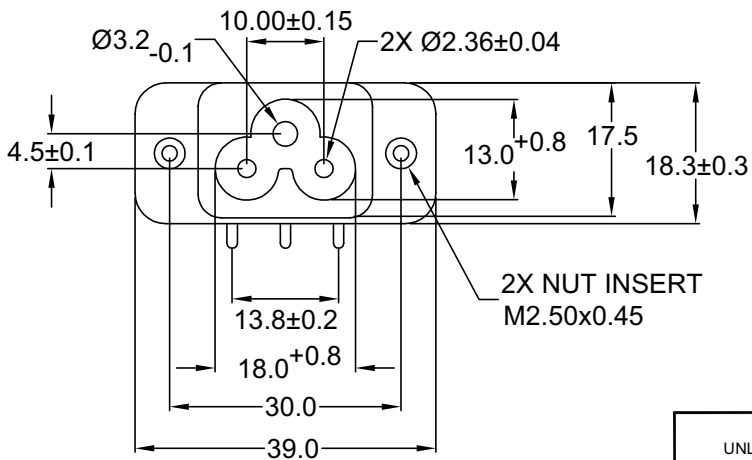
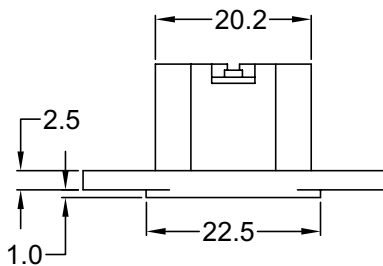
Insulation resistance: 100 Mohm min. @ 500VDC  
Dielectric withstanding voltage: 2000VAC for one minute



RECOMMENDED PANEL CUTOUT



FRONT OF CONNECTOR  
RECOMMENDED PCB LAYOUT



REV	DATE	CHANGE	CHNG		CHK		APPR	
			TD	JJ	TD	JJ	PB	TD
A	03/00	DELETE DUPLICATE DIM						
B	5/9/00	REV'D TOL. PER IEC 60320						
C	8/6/01	ADD PANEL CUTOUT						
D	11/09/01	REVISED / UPDATED						

Distributed by Electro-Stock, Inc. sales@electrostock.com  
630-682-1542 Fax 630-682-1562 http://www.electrostock.com

TOLERANCE UNLESS OTHERWISE SPECIFIED	
X	± 1
X.X	± 0.4
X.XX	± 0.20

DRAWN BY	SS	DATE:	03/02/00
CHECK BY	PB	DATE:	03/02/00
APPR BY	TD	DATE:	03/02/00

**Power Dynamics, Inc.**  
Phone: 973 560-0019 Whippany, New Jersey Fax: 973 560-0076

PART: MINIATURE IEC 60320 C6 APPL. INLET;  
FLUSH FLANGE MOUNT, PC TERMINALS

**42R51-5131RA**

SIZE: A SCALE: NTS

ALL DIMENSIONS FOR REFERENCE ONLY  
DIMENSIONS ARE IN MILLIMETERS

SHEET 1 of 1  
REV: D