

PC Series CHASSIS MOUNT, SINGLE AND DOUBLE STAGE EMI/RFI LINE FILTER.



FEATURES

The PC series offers superior performance in suppressing Line-to-Line and Line-to-Ground noise. Designed for easy mounting, this low profile Chassis mount filter is PDI's most popular filter offering current ratings up to 20 Amps at 250VAC. One size package offers both single and double stage filtering.

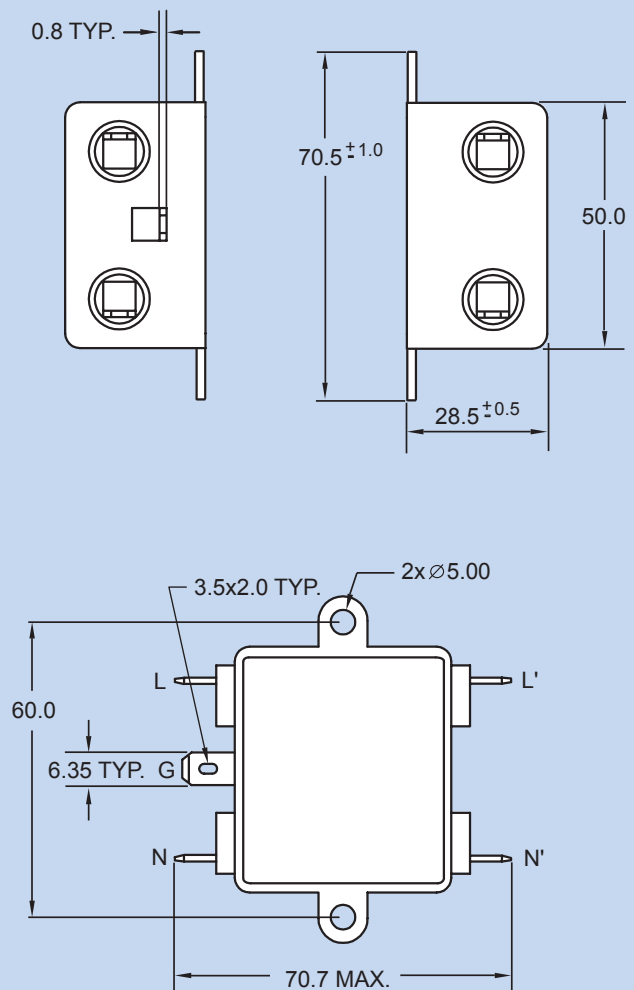
APPLICATIONS

Computer & networking equipment, Measuring & control equipment, Data processing equipment, laboratory instruments, Switching power supplies, other electronic equipment.

TECHNICAL DATA

- Rated Voltage: 250VAC
- Rated Current: 1A, 3A, 5A, 6A, 10A, 15A, 20A
- Power Line Frequency: 60Hz
- Leakage Current: 0.8mA, 250VAC
- Hipot Rating (one minute)
 - Line to Ground: 2250VDC
 - Line to Line: 1450VDC
- Temperature Range: -25C to +85C

MECHANICAL DIMENSIONS (Unit: mm)







Specifications subject to change without notice. Dimensions (mm).

PC Series Example & Ordering Code

PC 05 Q - 1

CURRENT RATING (A):

= 01⁺

= 03⁺

= 05*

= 06⁺

= 10⁺

= 15*

= 20*

TERMINAL:

QUICK CONNECT = Q

SCHEMATIC:

ONE STAGE = 1

TWO STAGE = 2

PC Series Attenuation Tables

Non-Medical Applications

Insertion loss in dB (50 Ohm circuit)

ONE STAGE

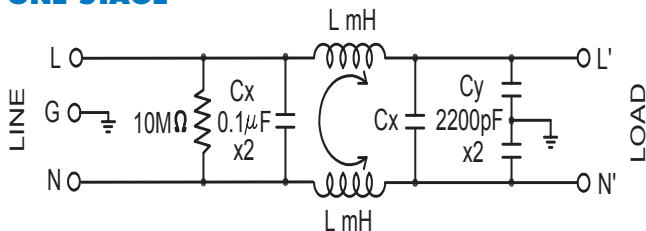
Current Rating	Inductance in mH	Comm. Mode(L-G) MHz						Diff. mode(L-L) MHz					
		.15	.5	1	5	10	30	.15	.5	1	5	10	30
5A	1.7	17	27	31	42	46	42	7	37	37	46	42	37
10A	1.2	16	24	28	34	36	40	9	36	35	40	42	38
15A	0.9	14	19	22	32	33	41	10	32	28	37	38	40
20A	0.5	7	17	22	32	34	50	7	27	28	36	39	46

TWO STAGE

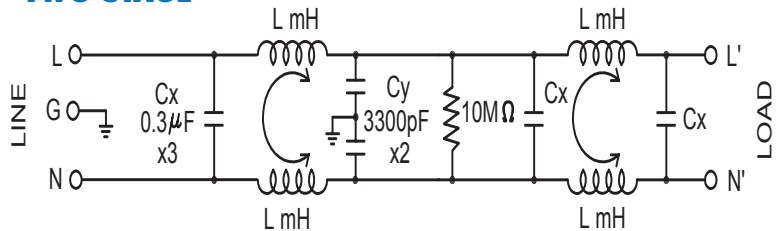
Current Rating	Inductance in mH	Comm. Mode(L-G) MHz						Diff. mode(L-L) MHz					
		.15	.5	1	5	10	30	.15	.5	1	5	10	30
1A	3.7	46	74	73	58	51	27	7	52	46	54	47	32
3A	1.8	38	68	80	58	53	48	5	53	62	51	44	38
6A	0.7	21	51	62	66	69	51	15	30	75	55	49	41
10A	0.3	4	32	50	66	58	48	6	18	54	55	48	41

SCHEMATICS

ONE STAGE



TWO STAGE



- *Single stage only
- +Double stage only
- +Available in single & double stage