

PB Custom Series



FEATURES

The filters in this series are designed to meet the ever changing needs of the Electronic and Medical industry. The filters can be made with various cable assemblies with or without braided shields to protect equipment when the noise generating device is located at a distance within the equipment. The shielded filter assemblies contain braiding that terminates 360 degrees inside the metal can to prevent any noise entering the filter. PDI can mold custom connectors at the end of the wires in any form or shape while the braiding is twisted to form the drain wire.

A ground choke can be added to enhance the grounding ability of the circuit. A bleeder resistor is added to prevent excessive voltages from developing across the filter capacitors when there is no load.

APPLICATIONS

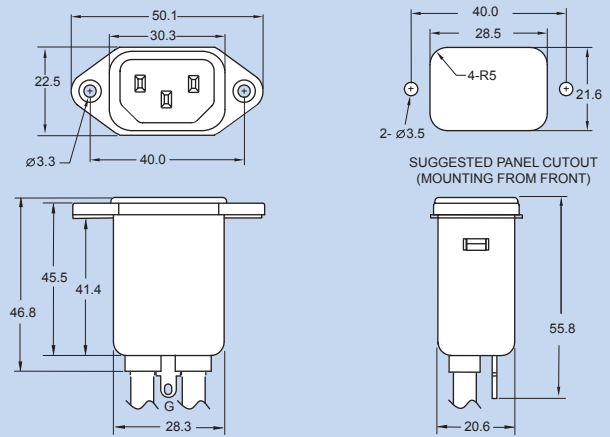
Computer & networking equipment, Measuring & control equipment, Data processing equipment, laboratory instruments, Switching power supplies, other electronic equipment.

TECHNICAL DATA

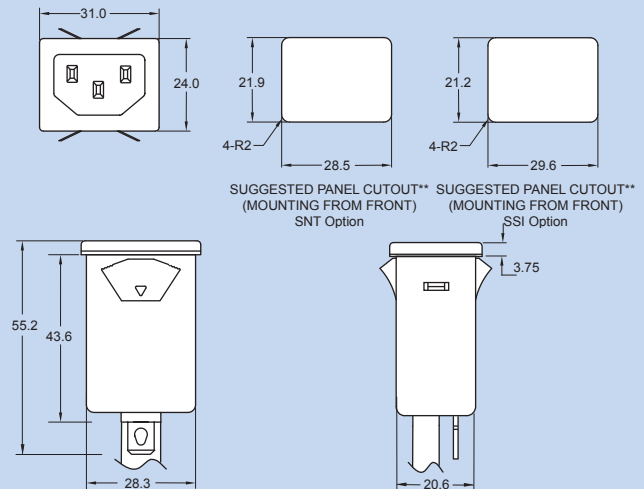
- Rated Voltage: 125/250VAC
- Rated Current: 1A, 2A, 3A, 6A, 10A, 15A
- Power Line Frequency: 50/60Hz
- Max. Leakage Current each Line to Ground:
 - @ 115VAC 60Hz: 0.25mA, max
 - @ 250VAC 50Hz: 0.45mA, max
- Hipot Rating (one minute)
 - Line to Ground: 2250VDC
 - Line to Line: 500VDC
- Temperature Range: -25C to +85C

MECHANICAL DIMENSIONS (Unit: mm)

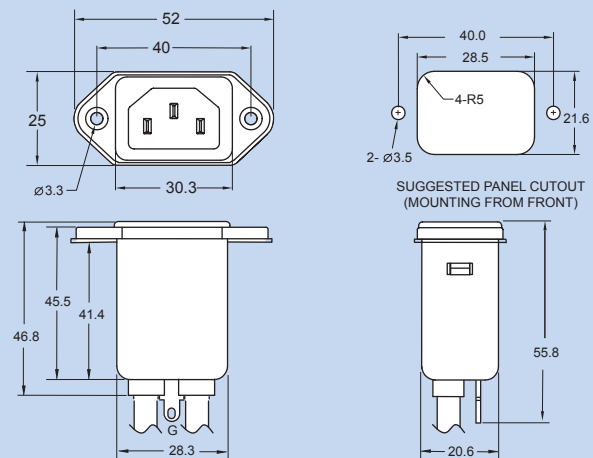
FLANGE MOUNT



SNAP-IN (SNT)



FLANGE MOUNT (B)

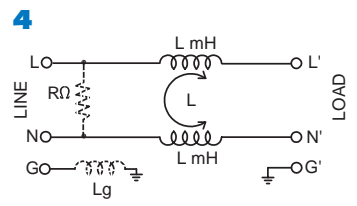
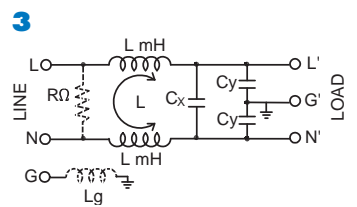
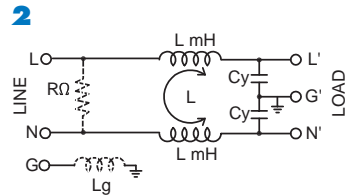
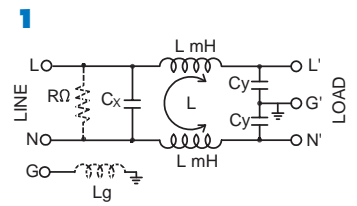


Specifications subject to change without notice. Dimensions (mm). See Appendix A for recommended power cord. See PDI full line catalog for detailed specifications on power cords.

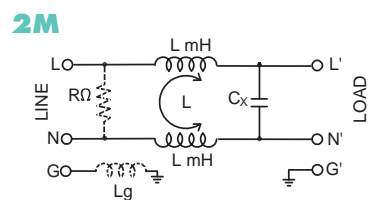
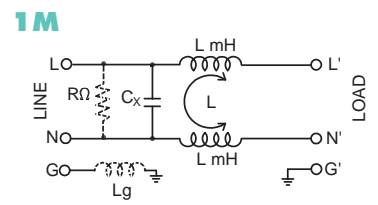
PB Custom Series

(contact PDI with your custom options)

SCHEMATICS



MEDICAL SCHEMATICS



CURRENT RATING (A):

- = 01
- = 02
- = 03
- = 06
- = 10
- = 15*

TERMINAL:

QUICK CONNECT, SOLDER, WIRE HARNESS

OPTIONS:

- NO BLEEDER RESISTOR & NO GROUND CHOKE
- BLEEDER RESISTOR (1/4 W, 1M)
- BLEEDER RESISTOR (1/2 W, 1M)
- BLEEDER RESISTOR (1/4 W, 1M) & GROUND CHOKE
- BLEEDER RESISTOR (1/2 W, 1M) & GROUND CHOKE
- GROUND CHOKE ONLY

COMPONENT LOCATION:

SEE SCHEMATICS

ATTENUATION CODE TABLE:

Non-Medical applications, select Attenuation code with corresponding component values from the table.

Cx (µF)	Cy (pF)	Inductance Per Current Rating (mH)							
		1A	2A	3A	6A	8A	10A	15A	
0.1	2200	6.5	3.8	2.5	0.8	1.05	0.2	0.2	= A
0.015	3300	1.9	1.5	1.1	0.6	*	0.3	0.2	= B
0.1	3300	3.7	2.7	1.8	0.8	1.05	0.3	0.2	= C
0.1	1000	10.5	4.2	2.5	1.05	*	0.3	0.2	= D
0.047	3300	4.6	3.4	2.5	0.9	*	0.3	0.2	= E
0.033	3300	9.5	4.3	1.8	0.85	*	0.3	0.2	= F
0.047	2200	10.5	4.0	1.2	0.53	*	0.3	0.2	= G
0.033	2200	5.0	3.7	1.8	0.6	*	0.2	0.2	= H
without Cx	without Cy	10.5	6.5	2.5	1.05	*	0.3	0.2	= I
0.22	2200	6.5	4.0	2.5	0.8	1.05	0.3	0.2	= J
0.22	3300	6.5	4.0	2.5	0.8	1.05	0.3	0.2	= K

Medical applications, select Attenuation code with corresponding component values from the table.

Cx (µF)	Inductance Per Current Rating (mH)							
	1A	2A	3A	6A	8A	10A	15A	
0.1	6.5	3.8	2.5	0.8	1.05	0.2	0.2	= M1
0.015	1.9	1.5	1.1	0.6	*	0.3	0.2	= M2
0.1	3.7	2.7	1.8	*	*	0.3	*	= M3
0.047	4.6	3.4	2.5	0.9	*	0.3	0.2	= M4
0.033	9.5	4.3	1.8	0.85	*	0.3	0.2	= M5
0.22	6.5	4.0	2.5	0.8	1.05	0.3	0.2	= M6
0.047	10.5	4	1.2	0.53	*	*	*	= M7
0.033	5	3.7	*	0.6	*	0.2	*	= M8

TYPE OF MOUNTING:

- STANDARD FLANGE MOUNT
- SPECIAL FLANGE MOUNT
- SNAP-IN TABS - TOP BOTTOM
- SNAP-IN TABS - SIDE

TERMINATION OPTIONS:

TERMINATIONS CAN BE MOLDED OR CAN TERMINATE WITH ANY TERMINALS REQUESTED BY THE CUSTOMER.

* 10A for TÜV; 15A for UL & cUL
* Contact PDI for availability